



Meridian

Life Science,® Inc.

Innovative Solutions. Trusted Partner.®

60 Industrial Park Road
Saco, ME 04072
Telephone: 207.283.6500
Fax: 207.283.4800
Email: info@meridianlifescience.com
www.MeridianLifeScience.com

SPECIFICATION SHEET

Important Note: Centrifuge before opening to ensure complete recovery of vial contents.

Catalog #: C01278M **Lot #:** 17I25209

Description: MAb to Influenza A H1
Monoclonal Antibody to Influenza Virus Type A Hemagglutinin H1

Specificity: Influenza A Virus hemagglutinin 1 (H1). Reacts with hemagglutinin of H1 serotype.

Clone: B213M

Host Animal: Mouse. Hybridization of Sp2/0 myeloma cells with spleen cells from BALB/c mice. **Isotype:** IgG₁

Source: Ascites

Immunogen: Purified Influenza A/NewCaledonia/20/99 (strain H1N1)

Format: Purified, Liquid

Purification: >90% pure (SDS-PAGE). Protein A chromatography

Concentration: 3.6mg/ml (Sigma protein assay kit)

Affinity Constant: Not determined

Buffer: PBS, pH 7.4

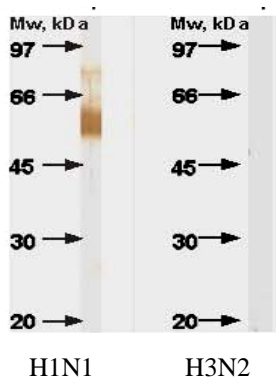
Preservative: 0.1% Sodium azide

Applications: Suitable for use in direct or indirect ELISA, sandwich immunoassay and Western blot. Each laboratory should determine an optimum working titer for use in its particular application. Other applications have not been tested but use in such assays should not necessarily be excluded.

FOR RESEARCH USE ONLY. NOT FOR USE IN DIAGNOSTIC PROCEDURES.

Recommended pair for sandwich immunoassay. Detects H1 of Influenza A and recombinant H1 with high specificity. Does not crossreact with hemagglutinin H3.

<u>Capture</u>	<u>Detection</u>
C01278M	C01282M



Western blot after PAGE in reducing conditions.
Anti-mouse IgG:HRP conjugate used for visualization

H1N1 – Influenza A/New Caledonia/20/99
H3N2 – Influenza A/Shangdong/9/93

C01278M (5ug/ml)

Storage: Store at 2-8°C.

Warning: This product contains sodium azide, which has been classified as Xn (Harmful), in European Directive 67/548/EEC in the concentration range of 0.1 – 1.0 %. When disposing of this reagent through lead or copper plumbing, flush with copious volumes of water to prevent azide build-up in drains.

FOR RESEARCH USE ONLY. NOT FOR USE IN DIAGNOSTIC PROCEDURES.